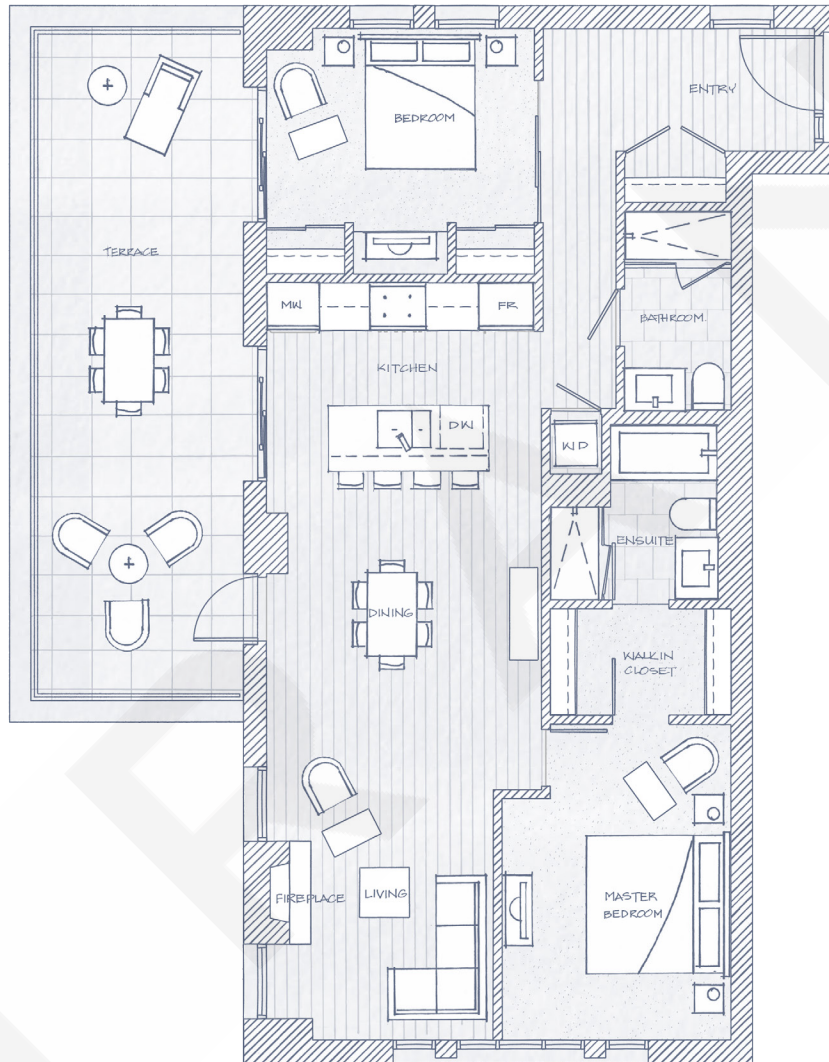


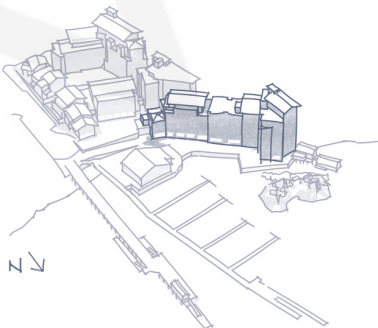
HORSESHOE BAY

OCEANFRONT VILLAS PLAN 11

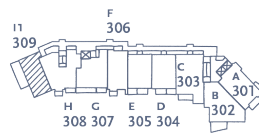
2 Bedroom / 1,496 sf Total Living
Terrace 329 sf



OCEANFRONT VILLAS



FLOOR 3

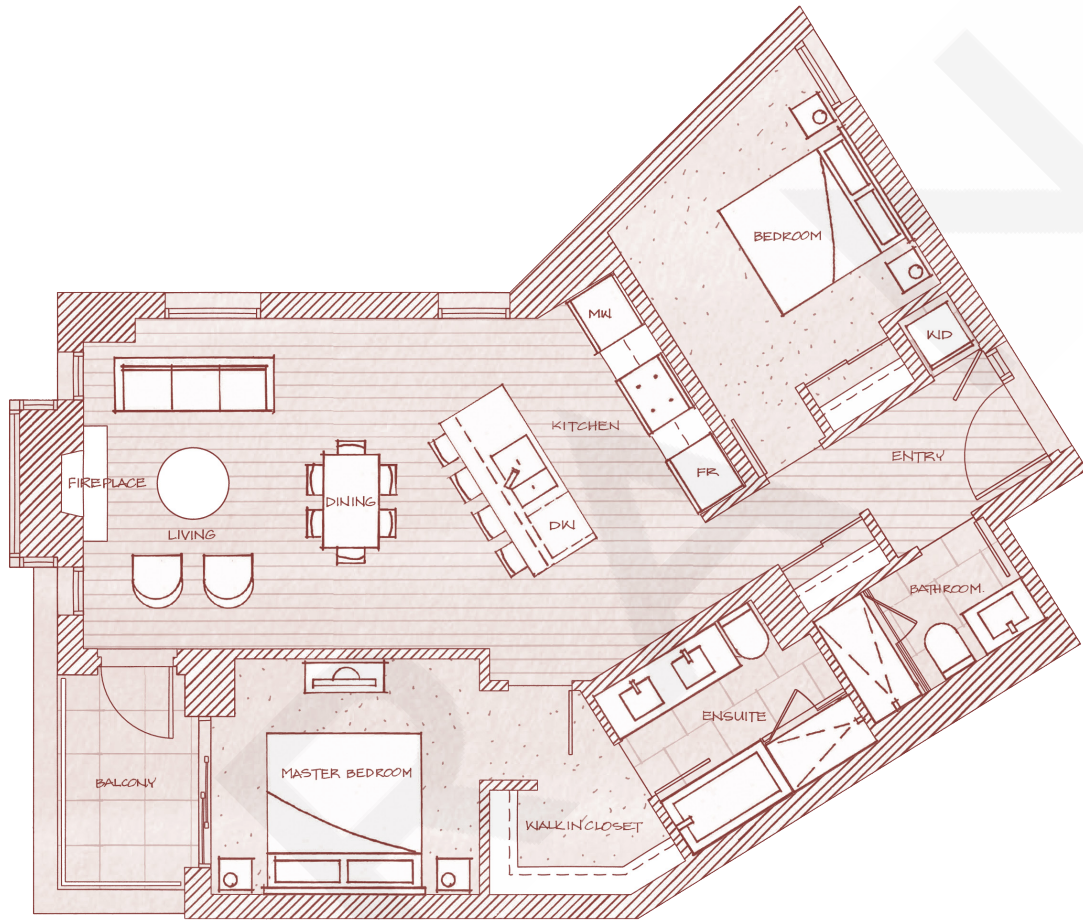


WEST
VANCOUVER
CANADA

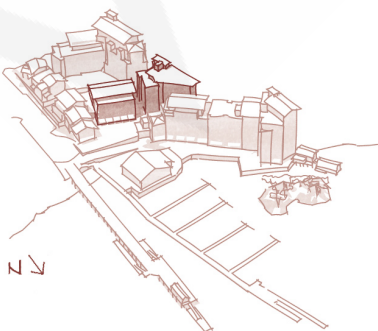
HORSESHOE BAY

BAY VIEW VILLAS PLAN D1

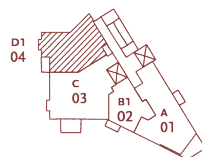
2 Bedroom / 1,092 sf Total Living
Balcony 53 sf



BAY VIEW VILLAS



FLOOR 2 - 6



WEST
VANCOUVER
CANADA

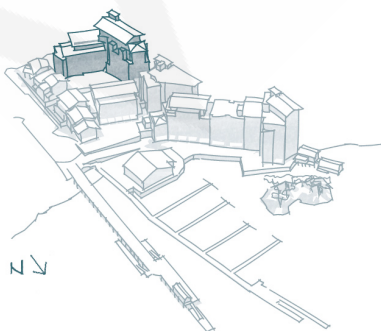
HORSESHOE BAY

FOREST VILLAS PLAN E1

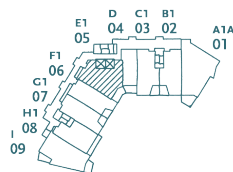
2 Bedroom / 1,276 sf
Balcony 117 sf



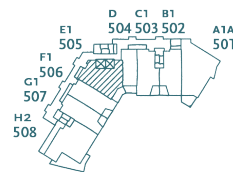
FOREST VILLAS



FLOOR 3 - 4



FLOOR 5



WEST
VANCOUVER
CANADA