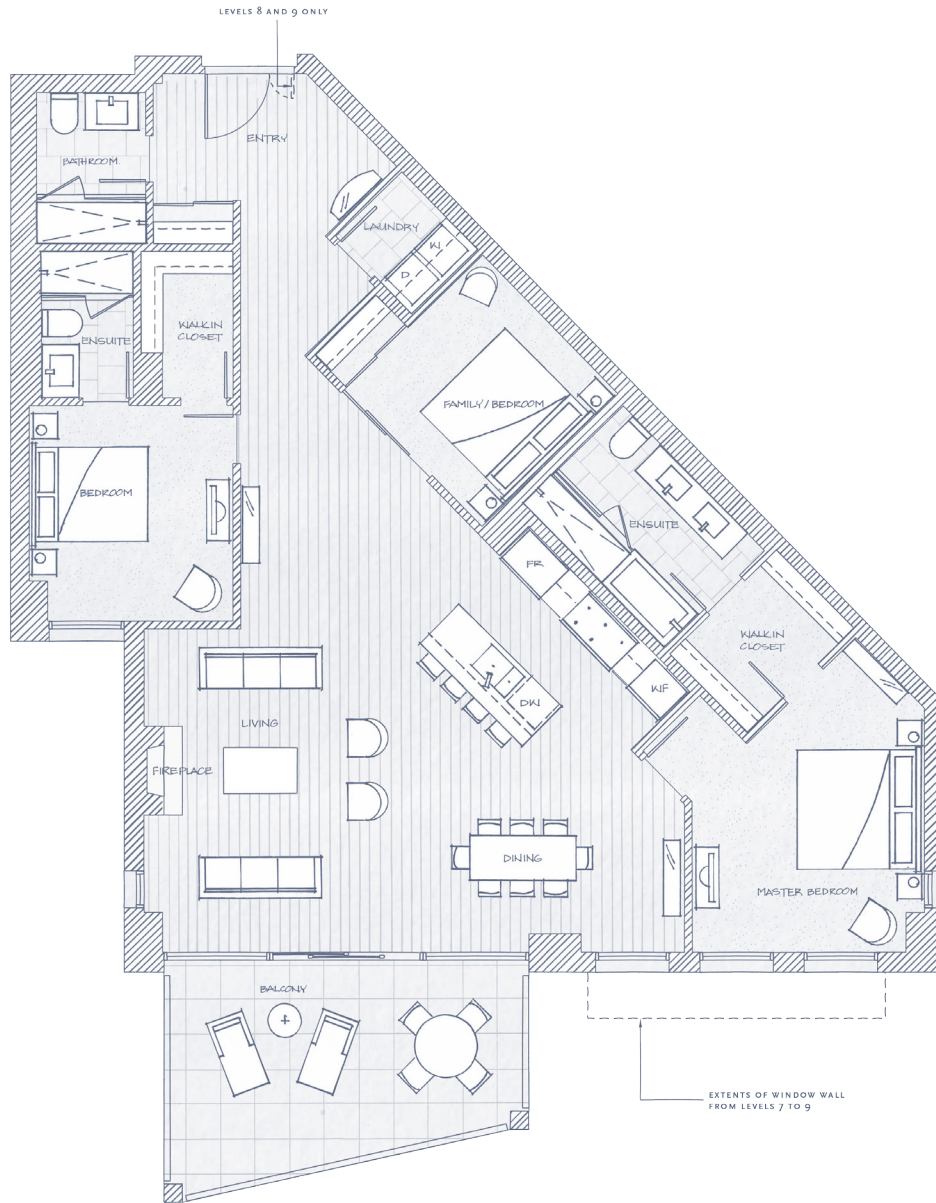


HORSESHOE BAY

OCEANFRONT VILLAS PLAN B

2 Bedroom + Family / 1,998 - 2,041 sf Total Living
Balcony 226 sf

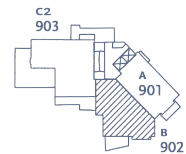
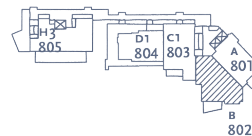
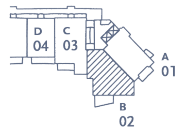
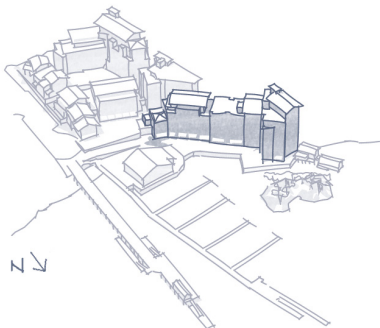


OCEANFRONT VILLAS

FLOOR 2 - 7

FLOOR 8

FLOOR 9



**WEST
VANCOUVER
CANADA**