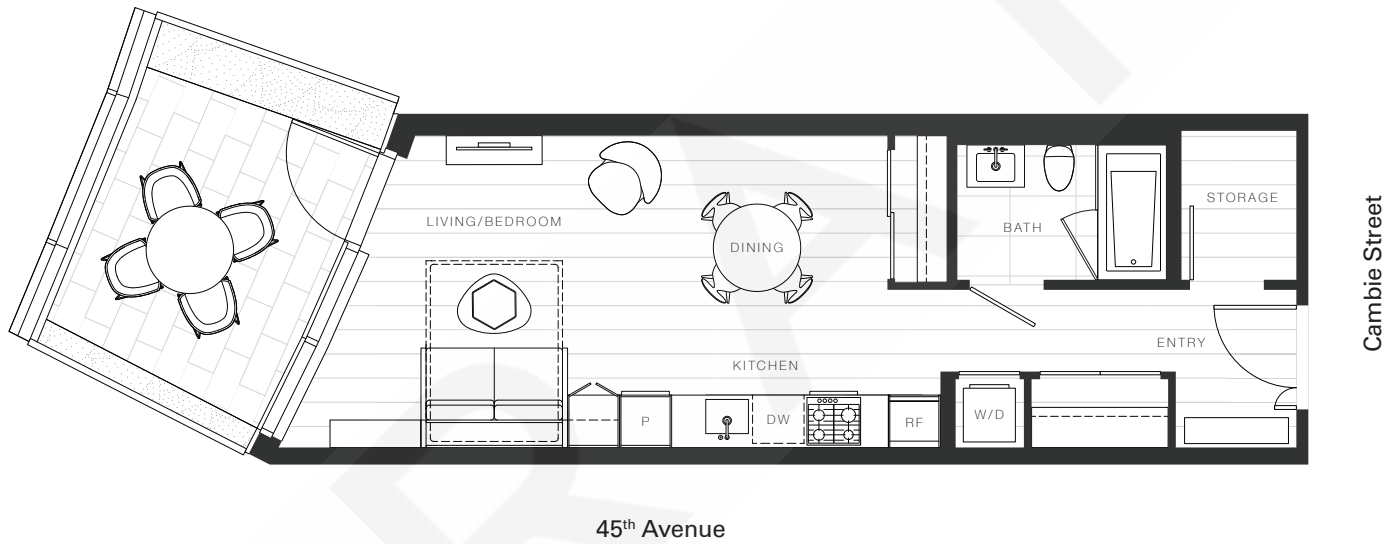


X Clémante

# Studio 604

—  
Total Living: 646 ft<sup>2</sup>  
Indoor: 505 ft<sup>2</sup>  
Outdoor: 141 ft<sup>2</sup>



## OAKRIDGE X CLÉMANDE

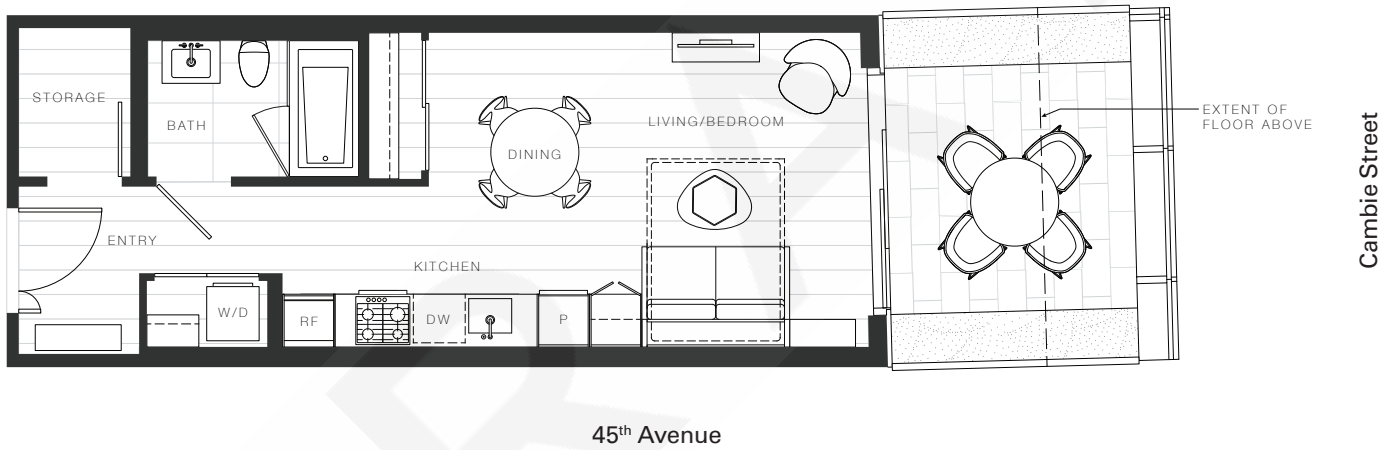
Dimensions, sizes, specifications, layouts and materials are approximate and provided for information purposes only and are not represented as being the actual final areas and dimensions. Prospective purchasers are advised that interior square footage is combined with balcony square footage and included in total advertised square footage of the homes. Exterior walls and glazing, balcony configurations, fascia, guard-rails, screens and façade panel locations are approximate and provided for information purposes only, and will vary in area, type, specifications, and extent depending on the home. The locations shown are not represented as being the final locations of these items. All of the foregoing (including without limitation the dimensions and layout) are subject to change in the developer's sole discretion, without compensation or notice. Please ask sales representative for details. E. & O.E.



X Clémade

# Studio 619

—  
Total Living: 574 ft<sup>2</sup>  
Indoor: 448 ft<sup>2</sup>  
Outdoor: 126 ft<sup>2</sup>



## OAKRIDGE X CLÉMANDE

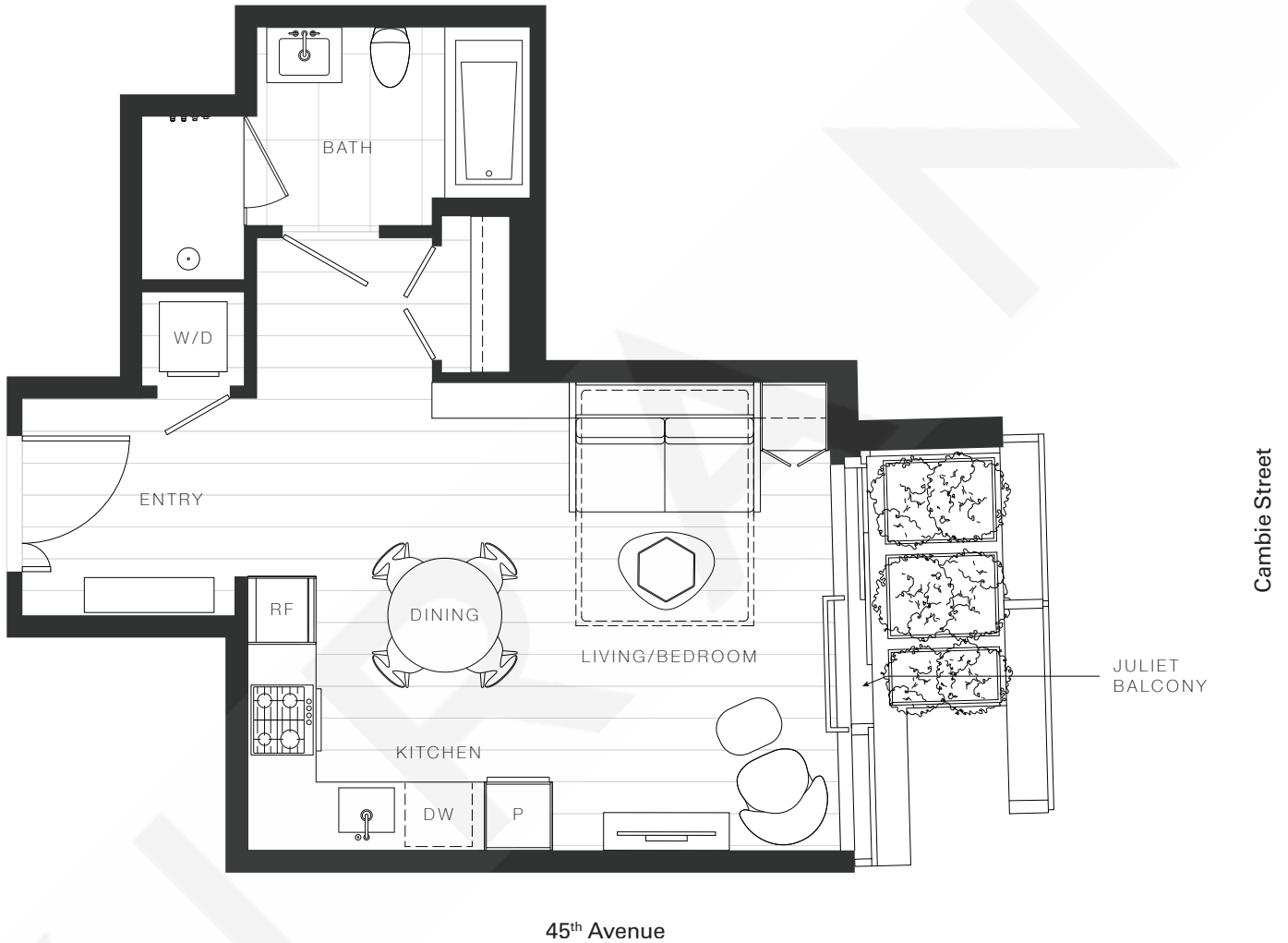
Dimensions, sizes, specifications, layouts and materials are approximate and provided for information purposes only and are not represented as being the actual final areas and dimensions. Prospective purchasers are advised that interior square footage is combined with balcony square footage and included in total advertised square footage of the homes. Exterior walls and glazing, balcony configurations, fascia, guard-rails, screens and façade panel locations are approximate and provided for information purposes only, and will vary in area, type, specifications, and extent depending on the home. The locations shown are not represented as being the final locations of these items. All of the foregoing (including without limitation the dimensions and layout) are subject to change in the developer's sole discretion, without compensation or notice. Please ask sales representative for details. E. & O.E.



X Clémade

Studio 1004

—  
Total Living: 456 ft<sup>2</sup>  
Indoor: 456 ft<sup>2</sup>



## OAKRIDGE X CLÉMANDE

Dimensions, sizes, specifications, layouts and materials are approximate and provided for information purposes only and are not represented as being the actual final areas and dimensions. Prospective purchasers are advised that interior square footage is combined with balcony square footage and included in total advertised square footage of the homes. Exterior walls and glazing, balcony configurations, fascia, guard-rails, screens and façade panel locations are approximate and provided for information purposes only, and will vary in area, type, specifications, and extent depending on the home. The locations shown are not represented as being the final locations of these items. All of the foregoing (including without limitation the dimensions and layout) are subject to change in the developer's sole discretion, without compensation or notice. Please ask sales representative for details. E. & O.E.



X Clémante

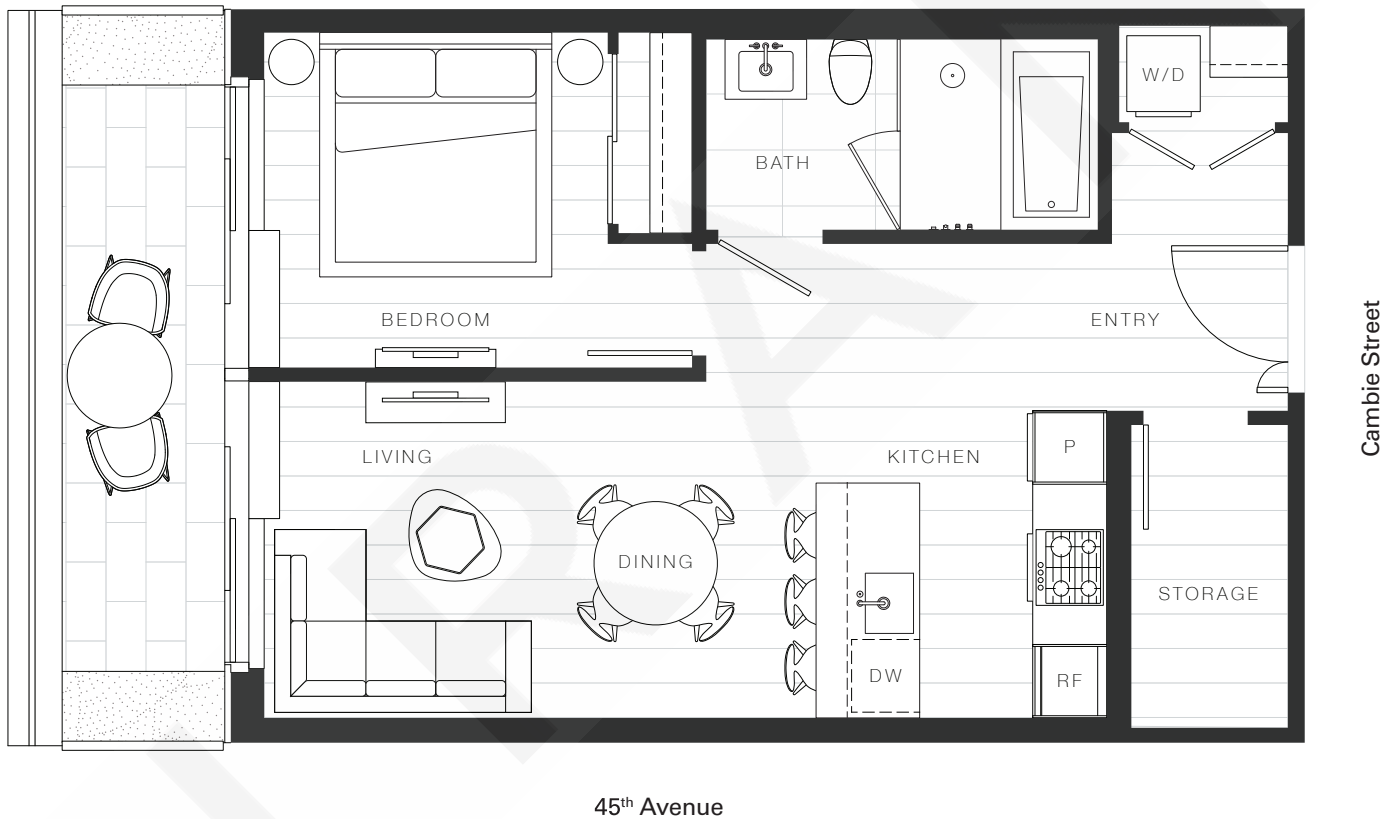
Home 808

1 Bedroom

Total Living: 676 ft<sup>2</sup>

Indoor: 588 ft<sup>2</sup>

Outdoor: 88 ft<sup>2</sup>



OAKRIDGE X CLÉMANDE

Dimensions, sizes, specifications, layouts and materials are approximate and provided for information purposes only and are not represented as being the actual final areas and dimensions. Prospective purchasers are advised that interior square footage is combined with balcony square footage and included in total advertised square footage of the homes. Exterior walls and glazing, balcony configurations, fascia, guard-rails, screens and façade panel locations are approximate and provided for information purposes only, and will vary in area, type, specifications, and extent depending on the home. The locations shown are not represented as being the final locations of these items. All of the foregoing (including without limitation the dimensions and layout) are subject to change in the developer's sole discretion, without compensation or notice. Please ask sales representative for details. E. & O.E.



X Clémade

Home 1002

1 Bedroom

Total Living: 704 ft<sup>2</sup>

Indoor: 636 ft<sup>2</sup>

Outdoor: 68 ft<sup>2</sup>



OAKRIDGE X CLÉMANDE

Dimensions, sizes, specifications, layouts and materials are approximate and provided for information purposes only and are not represented as being the actual final areas and dimensions. Prospective purchasers are advised that interior square footage is combined with balcony square footage and included in total advertised square footage of the homes. Exterior walls and glazing, balcony configurations, fascia, guard-rails, screens and façade panel locations are approximate and provided for information purposes only, and will vary in area, type, specifications, and extent depending on the home. The locations shown are not represented as being the final locations of these items. All of the foregoing (including without limitation the dimensions and layout) are subject to change in the developer's sole discretion, without compensation or notice. Please ask sales representative for details. E. & O.E.



X Clémade

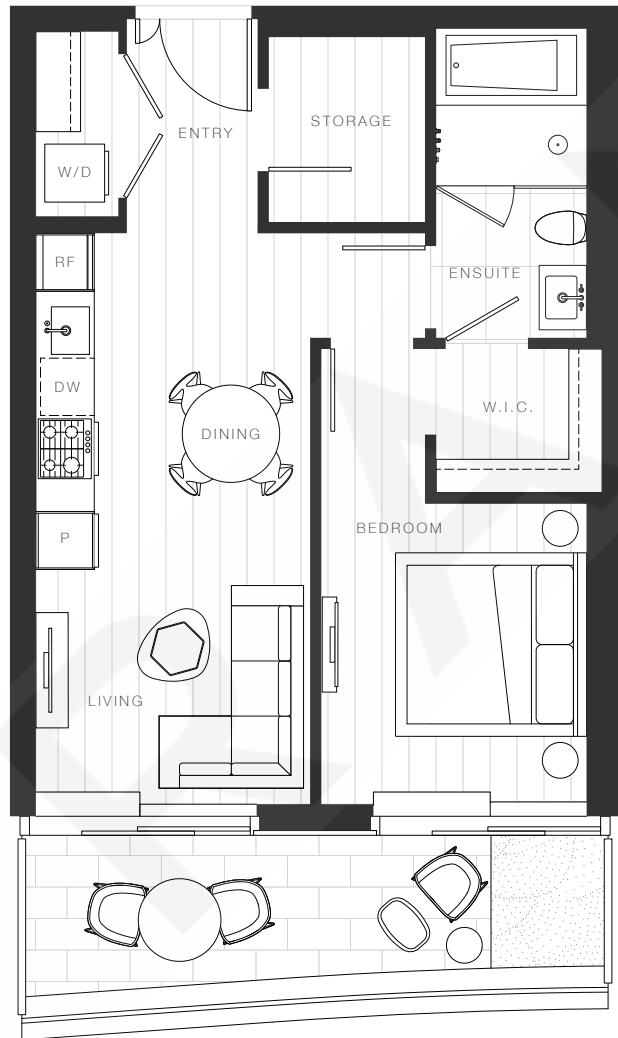
Home 1007

1 Bedroom

Total Living: 682 ft<sup>2</sup>

Indoor: 583 ft<sup>2</sup>

Outdoor: 99 ft<sup>2</sup>



Cambie Street

45<sup>th</sup> Avenue



**OAKRIDGE X CLÉMANDE**

Dimensions, sizes, specifications, layouts and materials are approximate and provided for information purposes only and are not represented as being the actual final areas and dimensions. Prospective purchasers are advised that interior square footage is combined with balcony square footage and included in total advertised square footage of the homes. Exterior walls and glazing, balcony configurations, fascia, guard-rails, screens and façade panel locations are approximate and provided for information purposes only, and will vary in area, type, specifications, and extent depending on the home. The locations shown are not represented as being the final locations of these items. All of the foregoing (including without limitation the dimensions and layout) are subject to change in the developer's sole discretion, without compensation or notice. Please ask sales representative for details. E. & O.E.



X Clémade

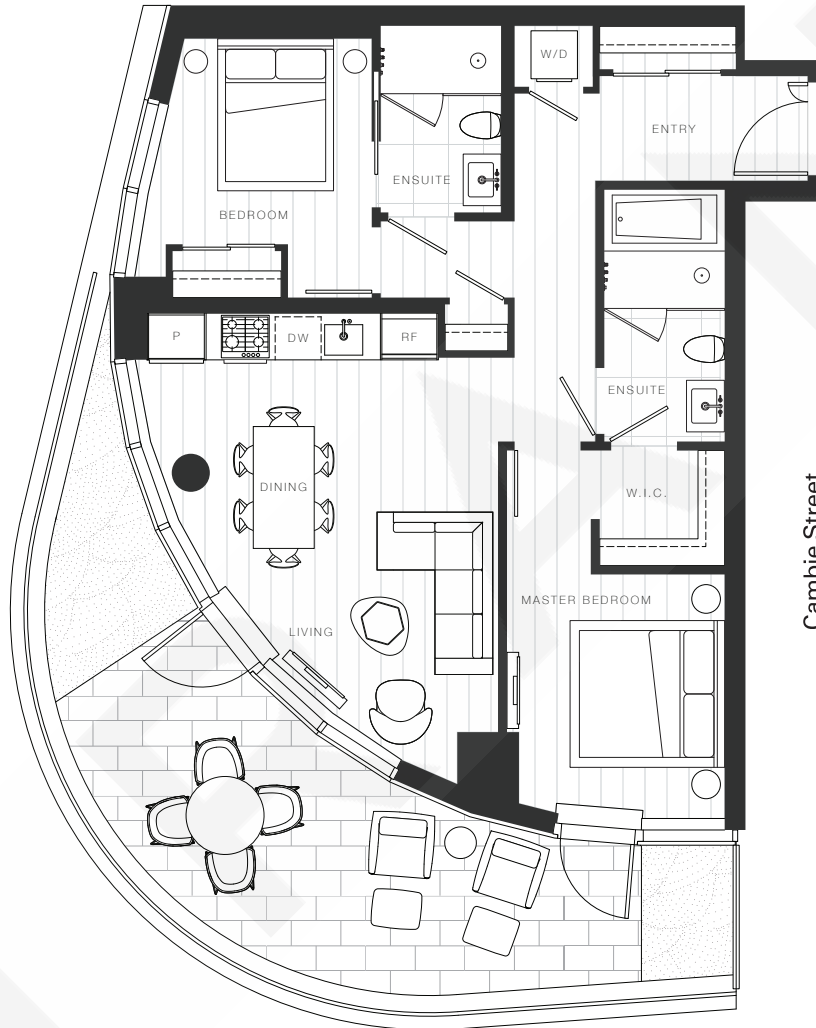
Home 1008

2 Bedroom

Total Living: 1,147 ft<sup>2</sup>

Indoor: 855 ft<sup>2</sup>

Outdoor: 292 ft<sup>2</sup>



45<sup>th</sup> Avenue

Cambie Street



**OAKRIDGE X CLÉMANDE**

Dimensions, sizes, specifications, layouts and materials are approximate and provided for information purposes only and are not represented as being the actual final areas and dimensions. Prospective purchasers are advised that interior square footage is combined with balcony square footage and included in total advertised square footage of the homes. Exterior walls and glazing, balcony configurations, fascia, guard-rails, screens and façade panel locations are approximate and provided for information purposes only, and will vary in area, type, specifications, and extent depending on the home. The locations shown are not represented as being the final locations of these items. All of the foregoing (including without limitation the dimensions and layout) are subject to change in the developer's sole discretion, without compensation or notice. Please ask sales representative for details. E. & O.E.



X Clémante

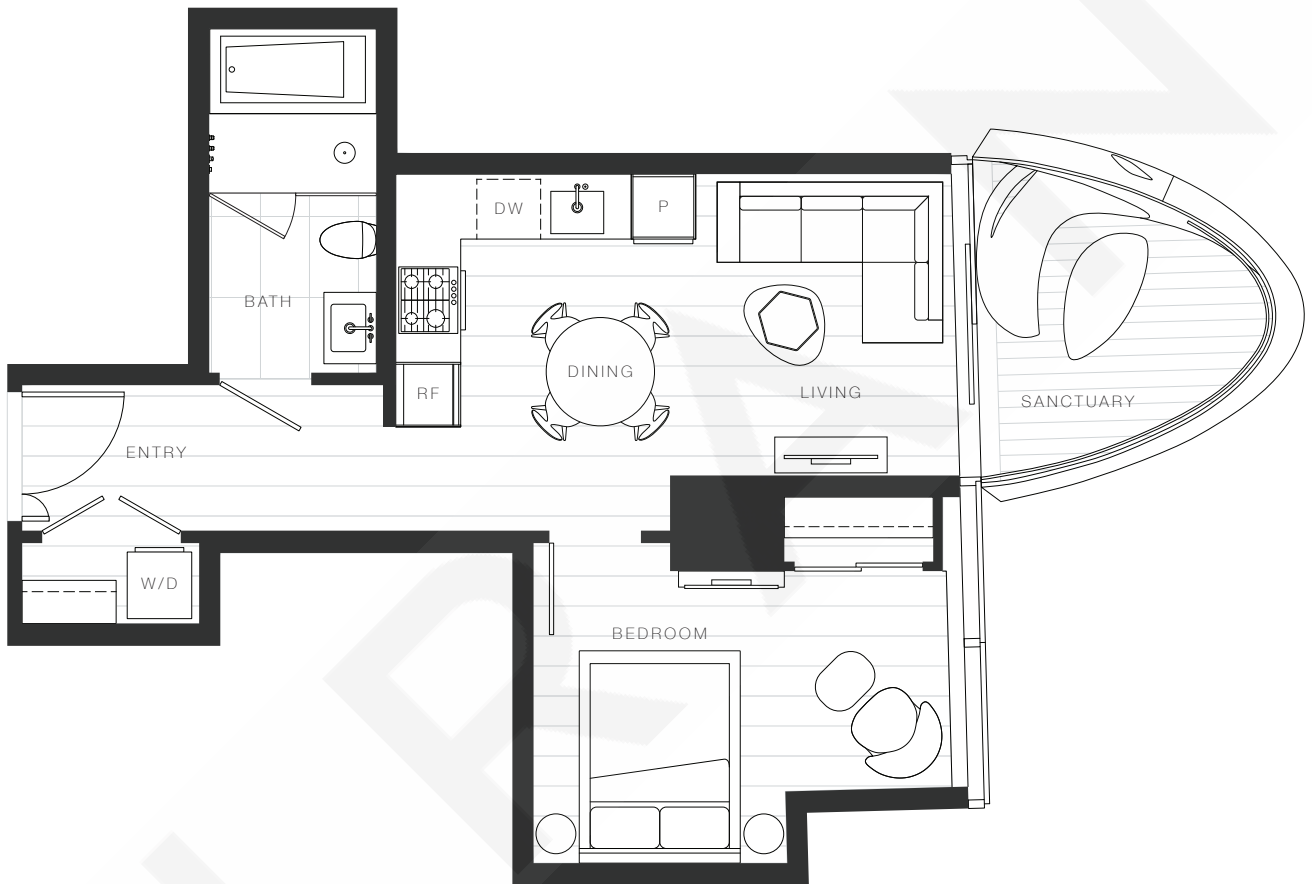
Home 1603

1 Bedroom

Total Living: 582 ft<sup>2</sup>

Indoor: 514 ft<sup>2</sup>

Outdoor: 68 ft<sup>2</sup>



45<sup>th</sup> Avenue

Cambie Street



OAKRIDGE X CLÉMANDE

Dimensions, sizes, specifications, layouts and materials are approximate and provided for information purposes only and are not represented as being the actual final areas and dimensions. Prospective purchasers are advised that interior square footage is combined with balcony square footage and included in total advertised square footage of the homes. Exterior walls and glazing, balcony configurations, fascia, guard-rails, screens and façade panel locations are approximate and provided for information purposes only, and will vary in area, type, specifications, and extent depending on the home. The locations shown are not represented as being the final locations of these items. All of the foregoing (including without limitation the dimensions and layout) are subject to change in the developer's sole discretion, without compensation or notice. Please ask sales representative for details. E. & O.E.





X Clémade

# Penthouse 1

Total Living: 1,746 ft<sup>2</sup>  
Indoor: 1,610 ft<sup>2</sup>  
Outdoor: 136 ft<sup>2</sup>



Cambie Street

45<sup>th</sup> Avenue



## OAKRIDGE X CLÉMANDE

Dimensions, sizes, specifications, layouts and materials are approximate and provided for information purposes only and are not represented as being the actual final areas and dimensions. Prospective purchasers are advised that interior square footage is combined with balcony square footage and included in total advertised square footage of the homes. Exterior walls and glazing, balcony configurations, fascia, guard-rails, screens and façade panel locations are approximate and provided for information purposes only, and will vary in area, type, specifications, and extent depending on the home. The locations shown are not represented as being the final locations of these items. All of the foregoing (including without limitation the dimensions and layout) are subject to change in the developer's sole discretion, without compensation or notice. Please ask sales representative for details. E. & O.E.



X Clémade

# Penthouse 3

Total Living: 4,444 ft<sup>2</sup>

Indoor: 1,843 ft<sup>2</sup>

Outdoor: 2,601 ft<sup>2</sup>



45<sup>th</sup> Avenue

Cambie Street



## OAKRIDGE X CLÉMANDE

Dimensions, sizes, specifications, layouts and materials are approximate and provided for information purposes only and are not represented as being the actual final areas and dimensions. Prospective purchasers are advised that interior square footage is combined with balcony square footage and included in total advertised square footage of the homes. Exterior walls and glazing, balcony configurations, fascia, guard-rails, screens and façade panel locations are approximate and provided for information purposes only, and will vary in area, type, specifications, and extent depending on the home. The locations shown are not represented as being the final locations of these items. All of the foregoing (including without limitation the dimensions and layout) are subject to change in the developer's sole discretion, without compensation or notice. Please ask sales representative for details. E. & O.E.



X Clémade

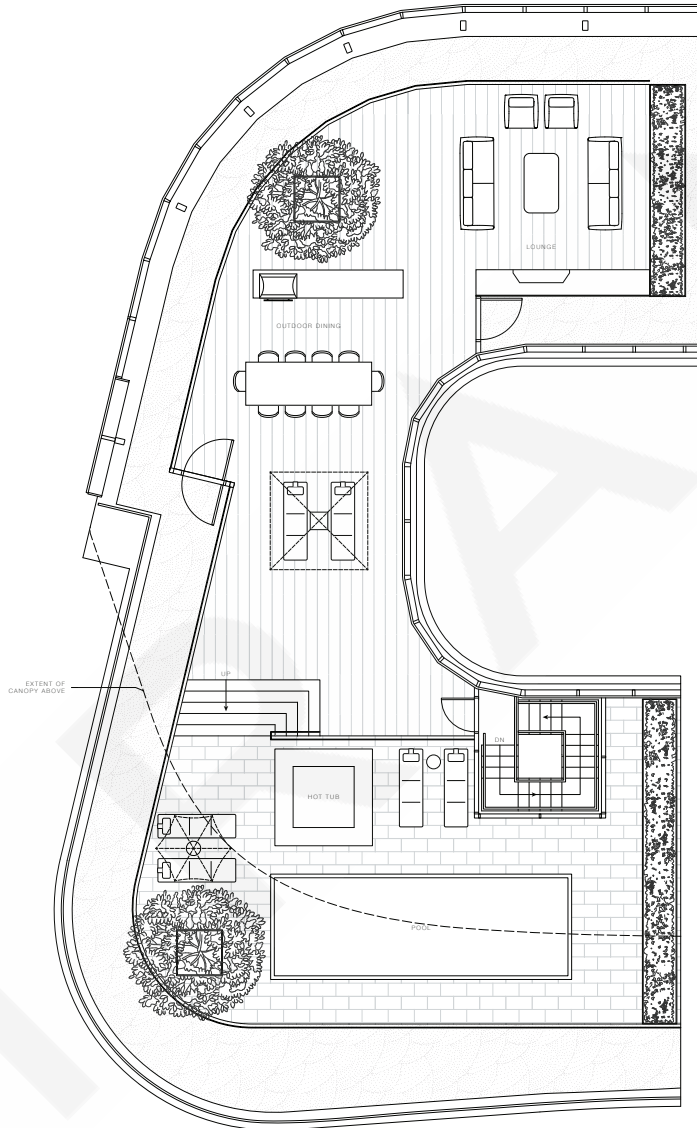
# Penthouse 3

## Roof Deck

Total Living: 4,444 ft<sup>2</sup>

Indoor: 1,843 ft<sup>2</sup>

Outdoor: 2,601 ft<sup>2</sup>



Cambie Street



45<sup>th</sup> Avenue

## OAKRIDGE X CLÉMANDE

Dimensions, sizes, specifications, layouts and materials are approximate and provided for information purposes only and are not represented as being the actual final areas and dimensions. Prospective purchasers are advised that interior square footage is combined with balcony square footage and included in total advertised square footage of the homes. Exterior walls and glazing, balcony configurations, fascia, guard-rails, screens and façade panel locations are approximate and provided for information purposes only, and will vary in area, type, specifications, and extent depending on the home. The locations shown are not represented as being the final locations of these items. All of the foregoing (including without limitation the dimensions and layout) are subject to change in the developer's sole discretion, without compensation or notice. Please ask sales representative for details. E. & O.E.

