

Haneef Virani

Personal Real Estate Corporation

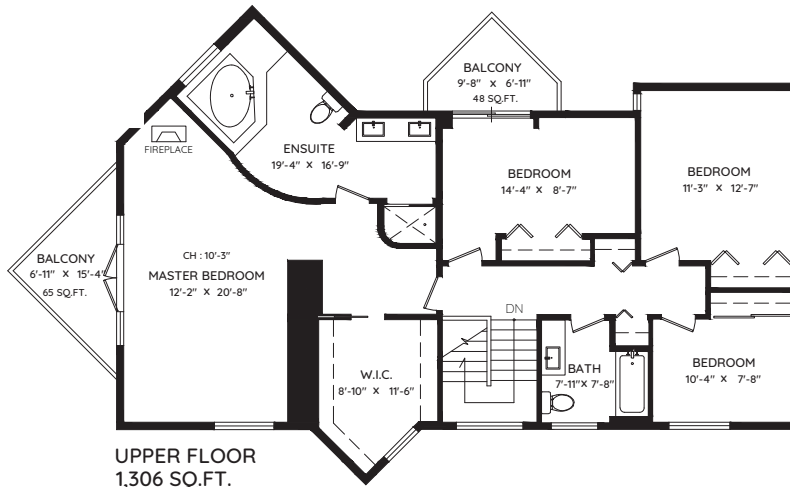
604.913.1000 haneef@virani.ca

www.virani.ca

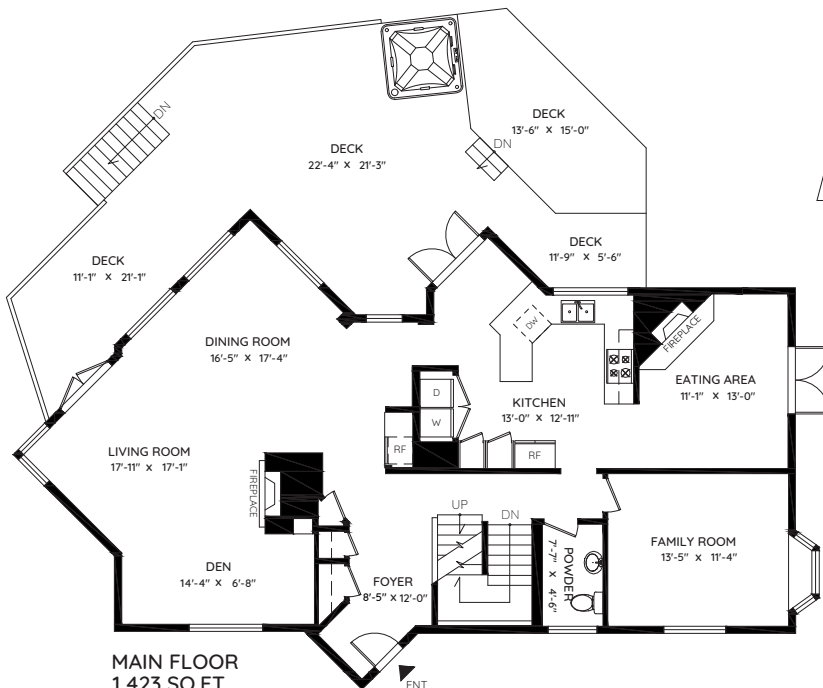


5747 TELEGRAPH TRAIL

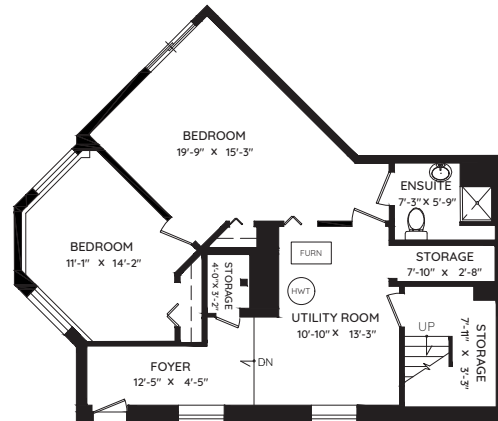
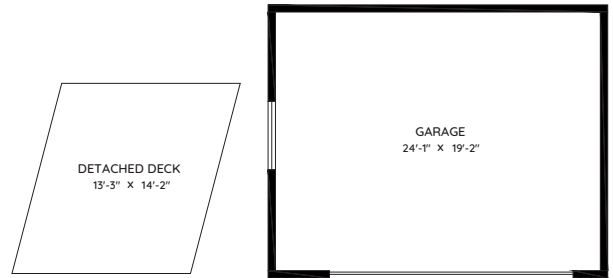
UPPER	1,306 SQ.FT.	GARAGE	511 SQ.FT.
MAIN	1,423 SQ.FT.	BALCONY	113 SQ.FT.
LOWER	815 SQ.FT.	DECK	766 SQ.FT.
TOTAL AREA	3,544 SQ. FT	DETACHED DECK	187 SQ.FT.



UPPER FLOOR
1,306 SQ.FT.
CH: 7'-9"



MAIN FLOOR
1,423 SQ.FT.
CH: 8'-1"



LOWER FLOOR
815 SQ.FT.
CH: 6'-8"